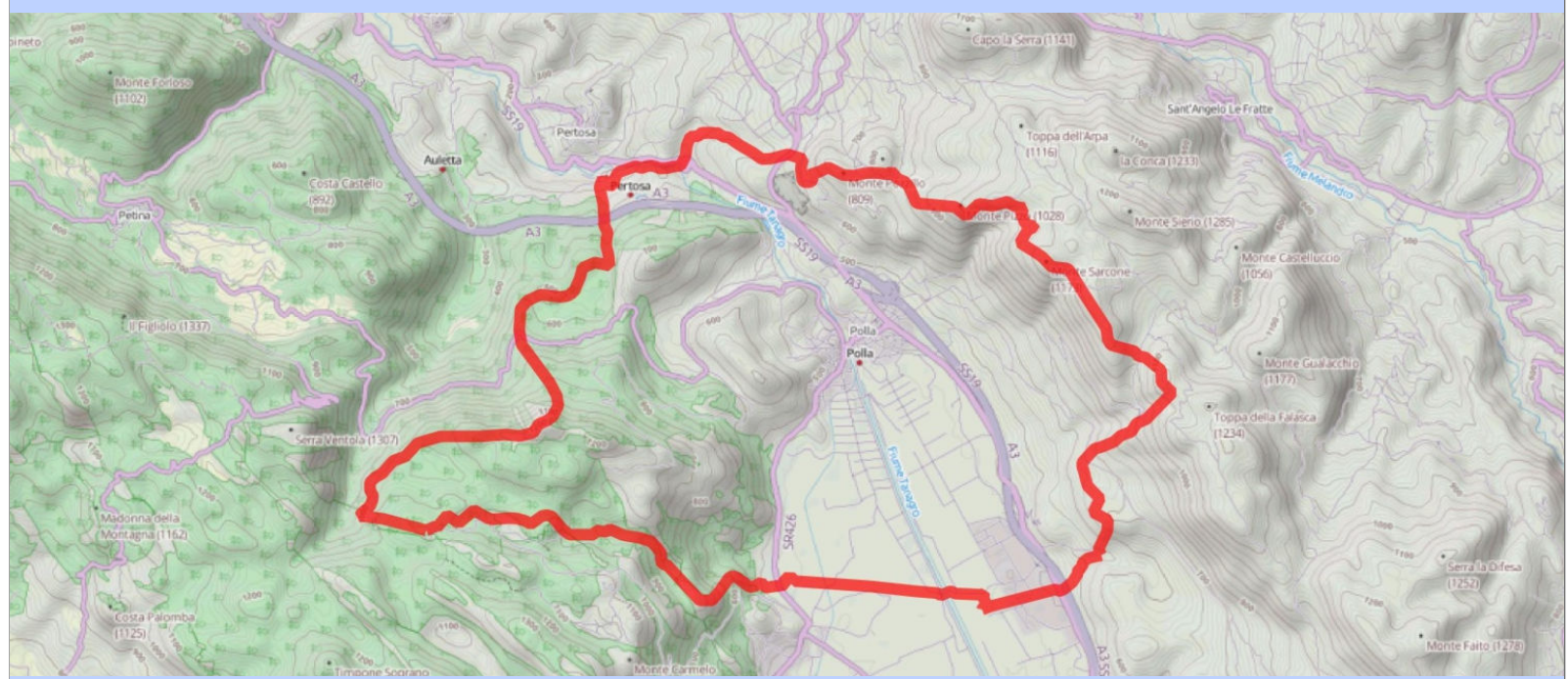


PIANO URBANISTICO COMUNALE



STUDIO GEOLOGICO

Carta Idrogeologica

1:5000

PROGETTISTA

Ing. Franco PRIORE

Redattori

Dott. Geol. Alberto ALFINITO

Dott. Geol. Domenico NEGRO

Dott. Geol. Francesco PETROSINO

COPROGETTISTA

Arch. Emilio BOSCO

SINDACO

Rag. Rocco Giuliano

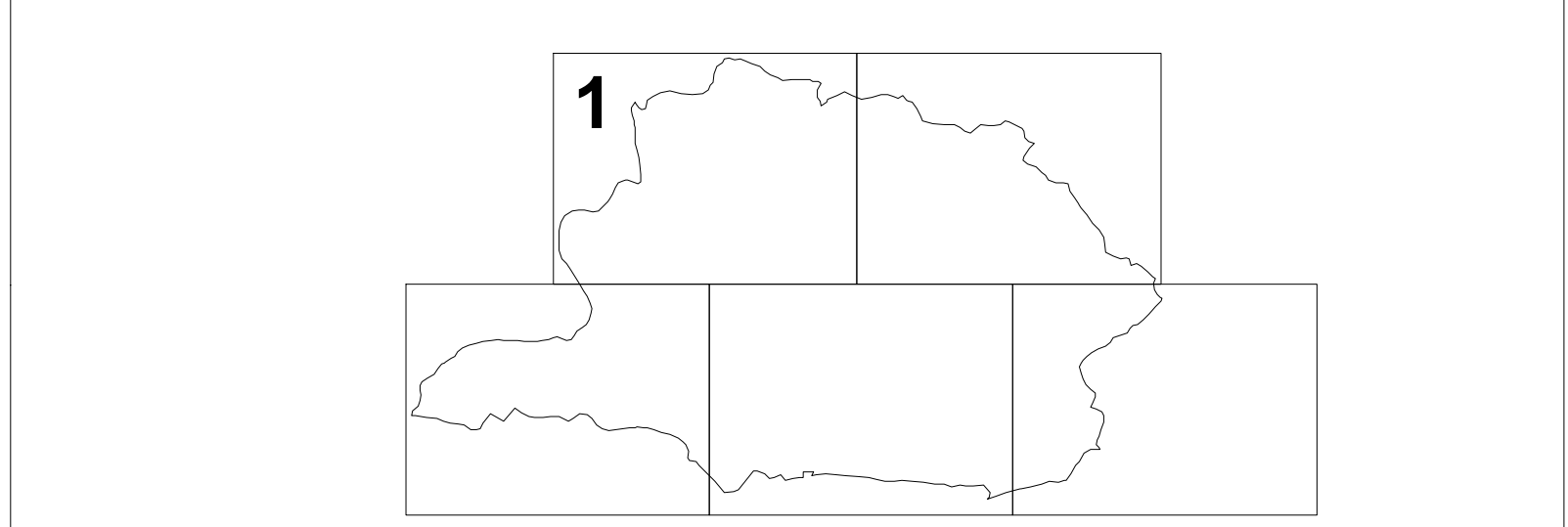
UTC

Ing. Carmine Palladino


Ing. Mario Iudice


Geom. Roberto Priore


Geom. Giuseppe Gassi





Legenda


 Sorgente


 Piezometrica profonda


 COMPLESSO LACUSTRE - ALLUVIONALE, permeabilità bassa

 COMPESSO ARENACEO PELITICO, permeabilità media

 COMPESSO ELUVIALEISABBIOSO, permeabilità media

 COMPESSO CONGLOMERATICO - DETRITICO, permeabilità alta

 COMPESSO DOLOMITICO, permeabilità alta

 COMPLESSO CALCARENITICO, permeabilità alta

